



Inspiring Innovation • Persistent Perfection



K52F The Perfect Fit for Work and Play

- Whole new Intel® Core™ processor family for enhanced multitasking and mobile computing performance
- ASUS Power4Gear with automatically adjusts fan speeds for quieter computing
- Palm Proof Technology disables the touchpad for uninterrupted typing and accuracy



Mobile Computing Performance

Equipped with the latest Intel® Core™ processor family, the ASUS K52F delivers the best mobile multitasking performance in its class, be it for multimedia entertainment or productivity.

Power4Gear with self-adjusting fan speeds for quiet computing and saves battery at the same time

Power4Gear with a self-adjusting fan helps you conserve battery power and provides a quieter computing



environment.



Integrated Intel GMA HD graphics

Equipped with Intel GMA HD graphics, the K52F provides stunning images and exciting multimedia enjoyment while on-the-move.

Stylishly Slim Profile and Smudge-proof Palm Rest

The ASUS K52F is designed to be your everyday computing companion, which is why it features a slim profile which allows you to carry it everywhere you go. The smudge-proof palm rest resists fingerprints, and helps the ASUS K52F retain its magnificent appearance all day, everyday.

Chiclet Keyboard

The Chiclet keyboard features wider key-caps for dust prevention and comfortable typing even after prolonged periods.



SmartLogon for convenient facial recognition access

SmartLogon allows you to log on via facial recognition. It even learns how to recognize you in varying amounts of brightness, or whether you are wearing any headgear. It provides you with convenient, key-less entry for instant enjoyment.

Intuitive Multi-touch Touchpad

A multitouch touchpad allows you to zoom in or out of pictures, or even scrolling up and down pages with minimal effort.



Palm Proof Technology for automatic palm detection for typing accuracy

The ASUS K52F features Palm Proof Technology, which intelligently analyzes the differences between palm and finger contact surfaces, and prevents the mouse cursor from accidentally moving while typing.



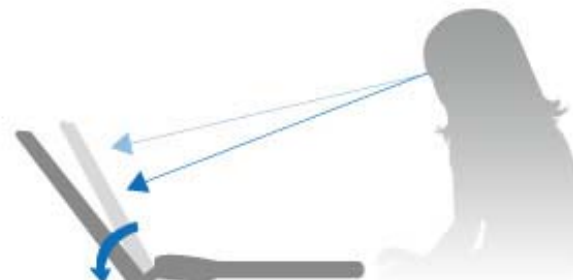
A Compelling Multimedia Experience

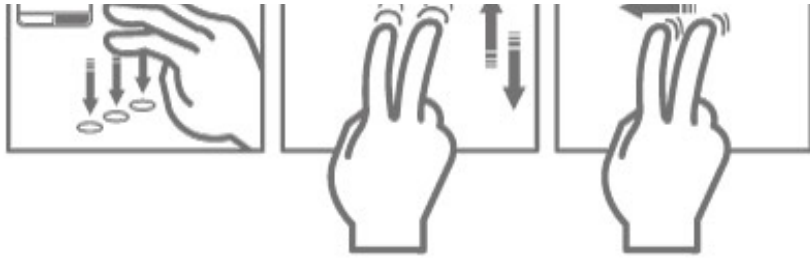
A 15.6-inch high definition LED panel with a 16:9 aspect ratio display adorns the ASUS K52F, complemented by SRS Premium Sound™ via Altec Lansing® speakers for a compelling multimedia experience. With HDMI support, the expansion possibilities are limitless, connecting to HDMI-capable TVs, consoles and entertainment systems.



Sunken Hinge

The sunken hinge design provides a more comfortable viewing experience while on-the-move





Specifications

Processor & Cache Memory	Intel® Core™ i5 Processor 520M/430M : 2.4 GHz - 2.26 GHz, with Turbo Boost up to 2.93/2.53 GHz; Intel® Core™ i3 Processor 350M/330M : 2.6 GHz - 2.13 GHz,
Operating System	Genuine Windows® 7 Home Basic Genuine Windows® 7 Home Premium Genuine Windows® 7 Professional Genuine Windows® 7 Ultimate
Chipset	Mobile Intel® HM55 Express Chipset
Main Memory	DDR3 1066 MHz SDRAM, 2 x SODIMM socket for expansion up to 8GB SDRAM
Display	15.6" HD (1366x768) LED backlight
Video Graphics & Memory	Embedded Intel® GMA HD
Hard Drive	640GB ,5400rpm 500GB,5400rpm;7200rpm 320GB,5400rpm;7200rpm 250GB,5400rpm
Optical Drive	DVD Super Multi Blu-Ray DVD Combo
Card Reader	3 in 1 card reader, SD,MMC,MS

Video Camera	VGA web camera (Fixed type)
Fax/Modem/LAN/WLAN	Integrated 802.11 b/g/n
LED Status Indicator	Numeric KB Lock Power-on/Suspend Battery Charging/full/low Storage device access Capital Lock Wireless on status indicator
Interface	1 x Microphone-in jack 1 x Headphone-out jack 1 x VGA port/Mini D-sub 15-pin for external monitor 3 x USB 2.0 ports 1 x RJ45 LAN Jack for LAN insert
Hot Keys	Function Keys: Fn+Del Insert on/off Fn+Enter(Numeric) Calculator Fn+F1 Suspend switch Fn+F2 WLAN switch Fn+F3 Access to the E-mail Fn+F4 Access to the Internet Fn+F5 Brightness down Fn+F6 Brightness up Fn+F7 LCD on/off Fn+F8 LCD/CRT switch display Fn+F9 TouchPad Lock Fn+F10 Volume on/mute Fn+F11 Volume down Fn+F12 Volume up Fn+Ins Numeric Key Pad on/off Fn+Num Lk: Scroll Lock on/off Fn+Space Power 4Gear Fn+V Camera capture Fn+↑: Stop Fn+↓: Play/Pause Fn+ ← : Skip to Previous Track Fn+ → : Skip to Next Track

Audio	Built-in speaker and microphone Altec Lansing® co-brand speakers SRS Premium Sound
KeyBoard	ASUS 348mm keyboard integrated Numeric keypad 19mm full size key pitch
Battery Pack & Life	48.84WHrs, 4400 mAh, 3S2P 6 cells battery pack
AC Adapter	Output: 19 V DC, 3.42 A, 65W Input: 100-240 V AC, 50/60 Hz universal
Dimension & Weight	38 x 25.5 x 3.45~3.57 cm (W x D x H) 2.62 kg, (with 6 cell battery)
Security	BIOS Booting / HDD User Password Protection and security lock Kensington lock hole
Supplied Accessories	Optical Mouse (optional)
Multimedia Software	ASUSDVD 6-in-1
Virus & Tool Software	Trend Micro Internet Security 2009 Adobe Acrobat Reader 9.0 Power2Go
ASUS Utility	Asus Power4Gear Hybrid ASUS FastBoost ControlDeck ASUS SmartLogon Asus Live Update Asus Multi-Frame ASUS Wireless Console Virtual Camera ASUS Splendid Asus Screen Saver Fancy Start eManual AI Recovery
Warranty & e-support	2-year limited global hardware warranty *different by country 1-year battery pack warranty On-line problem resolution through web interface (BIOS, Driver update) OS (Microsoft Windows Vista) install/uninstall consultation

Bundled software install/uninstall consultation
ASUS software supporting
